



www.royalworktechnology.com

Contact Us ☎ 081-805-4869 ✉ sales@royalworktechnology.com

Royal Work Technology Co.,Ltd. (Head Office)

137/6 Soi Kubon 27 Yak 21, Ramintra Rd., Taraeng, Bangkhen, Bangkok 10220

รายการสินค้า

DESKTOP TEMP & HUMIDITY TEST CHAMBER



Constant Temperature Humidity Test Chamber
Temperature range $-20^{\circ}\text{C} \rightarrow +150^{\circ}\text{C}$ (adjustable)
Introduction.

It simulates the products in the chamber where the climate condition of different temperature and humidity, such as high-low temperature operation and storage, temperature cycling, high-low temperature and high-low humidity, moisture condensation etc. to check its adaptability and changing performance. It's required to conforms to IEC, JIS, GB, MIL to reach the consistency (including test schedule, condition, method) under the international standard.

WEIGHING INDICATOR, GENERAL PURPOSE



Weighing Indicator is a low cost, high quality general purpose weighing indicator for industry in a plastic housing.

Weight scale is approved by Weights & Measures Authorities for use in Accuracy Class III applications with 6000 and 2x 6000 intervals in accordance with OIML R76.

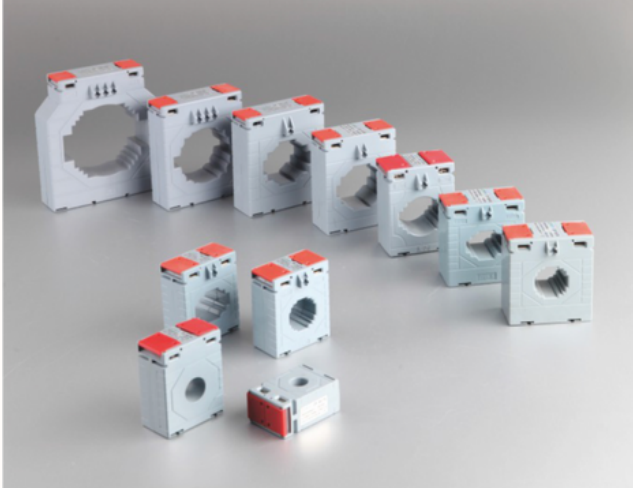
Weighing, Counting, Check weighing and Dynamic Weighing for animals are standard as is printing selectable from five languages. It has 100 memory locations for Average Part Weight for Counting and 100 product memories for check weighing.

FEATURES

- 30,000 displayed divisions
- OIML R76 Approved
- 12DC input with power adapter
- 25mm wide angle LCD display with back light
- 2 programmable function keys and navigation keys provide easy operation
- Linearity correction
- Gravity Adjustment
- Li-Ion long life rechargeable battery
- Auto Power off
- Panel mount, desk stand, pole/wall bracket mounting included
- RS-232C data port standard, 2nd RS-232C port option
- Ticket printing with Date, Time, Ticket no, Gross, Tare & Net Weight
- 100 product memories for check weighing and counting
- Smart dynamic weighing algorithm for animal weighing
- CE approved

รายการสินค้า

CURRENT TRANSFORMER



A current transformer (CT) is an instrument transformer designed to measure or monitor electrical current in a conductor by producing a reduced current proportional to the original current. CTs are widely used in power systems for current measurement, monitoring, and protection purposes, especially in high-voltage environments where direct measurement is impractical or unsafe.

THERMOCOUPLE CONNECTOR



A thermocouple connector is a specialized electrical connector used to connect thermocouples to measurement devices such as temperature controllers or data acquisition systems. Thermocouples are sensors that measure temperature by producing a voltage based on the temperature difference between two dissimilar metals.

รายการสินค้า

THERMOCOUPLE WIRE



Thermocouple wire is a specialized type of wire used to measure temperature. It's made of two different metals joined at one end, creating a junction. When the junction is exposed to different temperatures, a voltage is generated that can be measured and converted into a temperature reading.

VARIABLE AUTOTRANSFORMER



Product Description

The terrific design and assembling convert input voltage to output without waveform distortion even very the high voltage

Multi-model lineup meets the varied industry requirements

Handy and compact design for easy installation

All products are examined by complicate QC test

Product Features

Adjusts AC output target voltage continuously and efficient heat dissipation

High quality brush provides long life time for frequent adjustment

Minimize the spark and contact resistance

The outstanding synthetic resin of knob and shaft perform well insulation

Each coil has pass prevention test to prevent damage due to high temperature

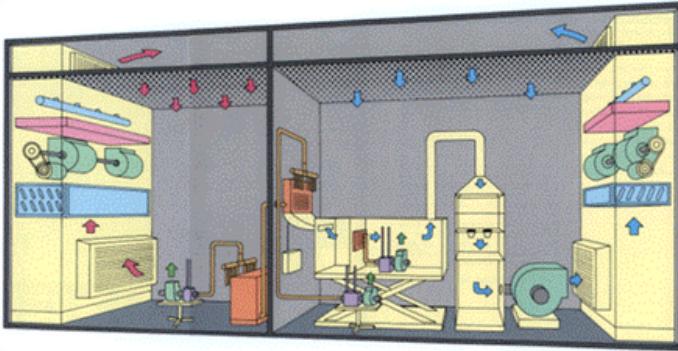
International quality standard and customize are available

Customize is input and output available



PROJECT & SOLUTION

PSYCHROMETRIC CALORIMETER TEST



A psychrometric calorimeter test is a method used to evaluate the thermal and moisture performance of HVAC systems, refrigeration equipment, or other climate control systems. It assesses how effectively the system transfers heat, maintains desired humidity levels, and manages energy efficiency.

TEMPERATURE & HUMIDITY CONTROL CHAMBER



A Temperature and Humidity Control Chamber, often called an environmental chamber, is a specialized device used to simulate specific climatic conditions. It is essential for testing and evaluating how products, materials, or systems perform under varying temperature and humidity levels. These chambers are widely used in industries such as HVAC, automotive, electronics, aerospace, and pharmaceuticals.